



Toward Treating GIS as Virtual RDF Graphs

Emanuele Della Valle

emanuele.dellavalle@polimi.it

<http://emanueledellavalle.org>

Joint work with:

Hafiz Muhammad Qasim

hafizqasim@gmail.com

<http://facebook.com/hafizqasim>

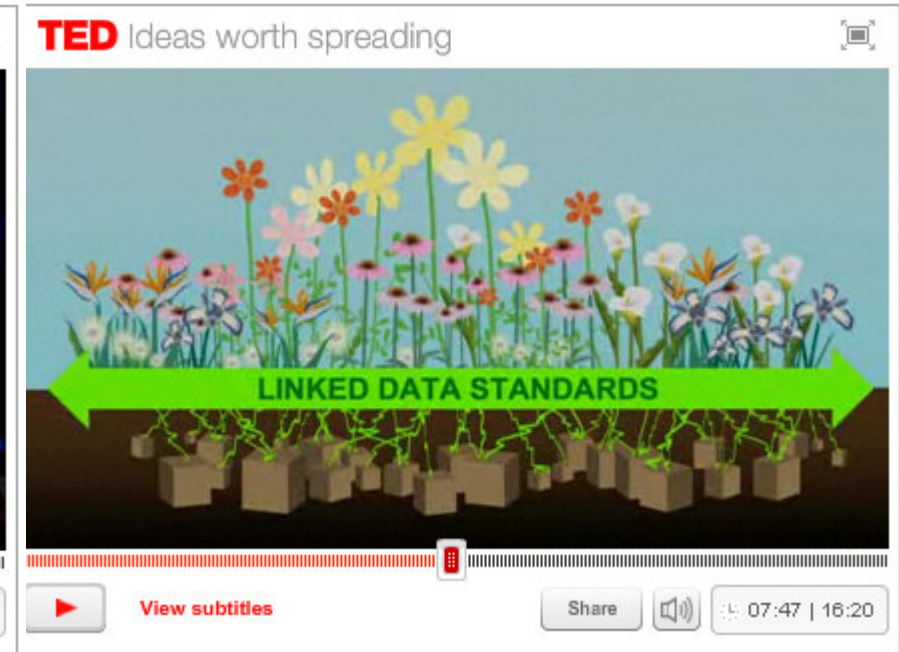
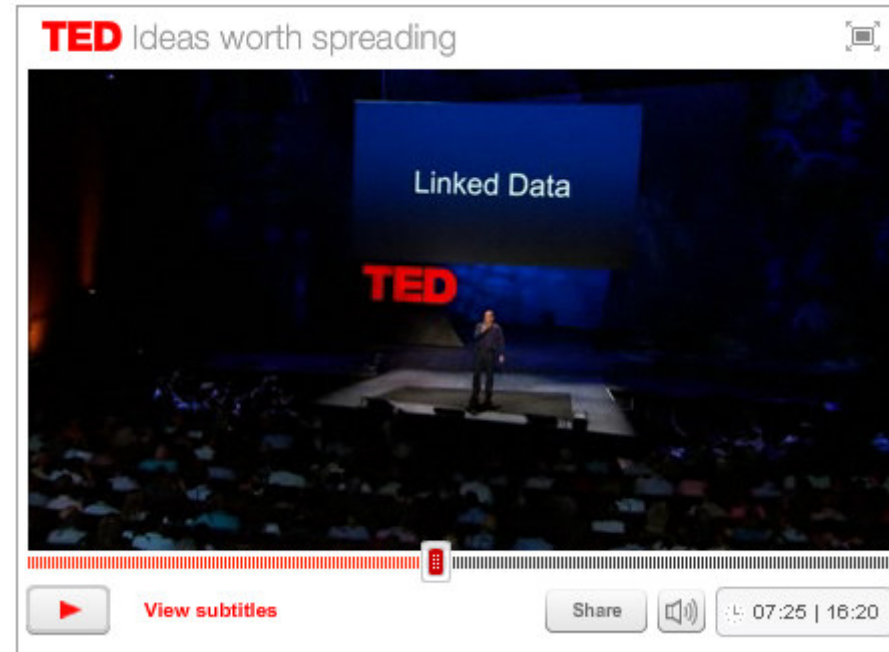
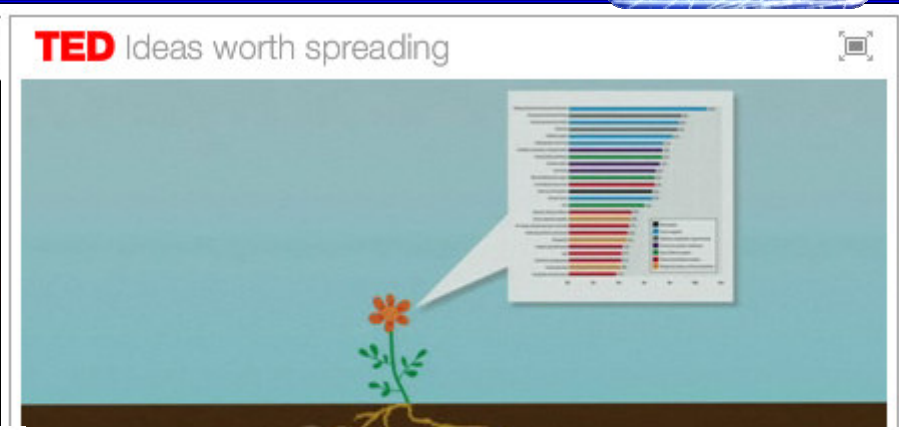
Irene Celino

irene.celino@cefriel.it

<http://iricelino.org>

WebMGS 2010 1st International Workshop on
Pervasive Web Mapping, Geoprocessing and Services

Background: Semantic Web and Linked Data



View the full talk at <http://www.ted.com/talks/view/id/484> !

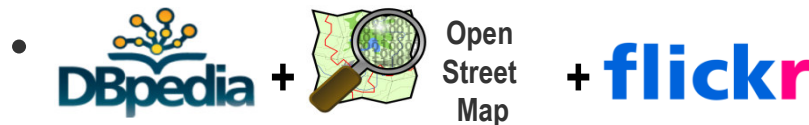
- **Goal**

- There is a growing **need for Semantic Web applications to efficiently access the content of GIS** without having to replicate the whole content into RDF

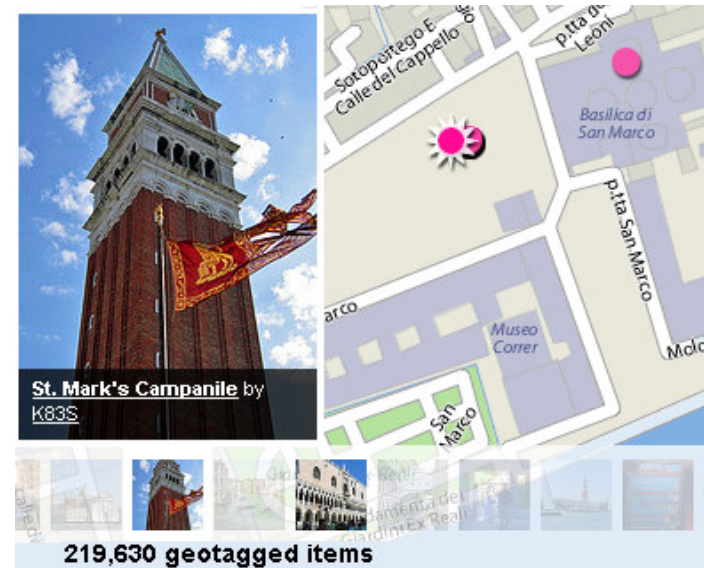
- **Running Example**

- Question
 - *Can the Semantic Web tell me which are the monuments that overlook a square in which more than 100 photos where geo-tagged?*

- Web Data Source



One of the Answers





- **G2R is**
 - an extension of D2RQ **declarative language to describe mappings** between GIS schemata and OWL/RDFS ontologies, and
 - a set of **extended value testing functions for SPARQL** that leverage SQL/MM spatial function implementation in existing GIS

