

Software Interoperability and Friendly Interfaces for Assessing Interventions in Cultural Heritage Domains

P. Cadenas, J. García-Tomillo, G. Rodríguez-Cano, J. Finat

MoBiVAP Group
University of Valladolid

WebMGS 2010
26-27th August



Introduction

- **GOAL:** Solve the knowledge management in Cultural Heritage (CH) domains to generate new knowledge.
- Knowledge is composed of
 - information acquisition,
 - recognition,
 - indexation and
 - classification of the most interesting features



Introduction

- **GOAL:** Solve the knowledge management in Cultural Heritage (CH) domains to generate new knowledge.
- Knowledge is composed of
 - information acquisition,
 - recognition,
 - indexation and
 - classification of the most interesting features
- Strategies for CH knowledge integration given in (Liao, 2005)



Introduction

- **GOAL:** Solve the knowledge management in Cultural Heritage (CH) domains to generate new knowledge.
- Knowledge is composed of
 - information acquisition,
 - recognition,
 - indexation and
 - classification of the most interesting features
- Strategies for CH knowledge integration given in (Liao, 2005)
- Development of a **friendly smart interface** capable of managing, by means of **hyper-graphs**, an assisted dialogue with a remote server where an **expert system** is in charge of different functionalities

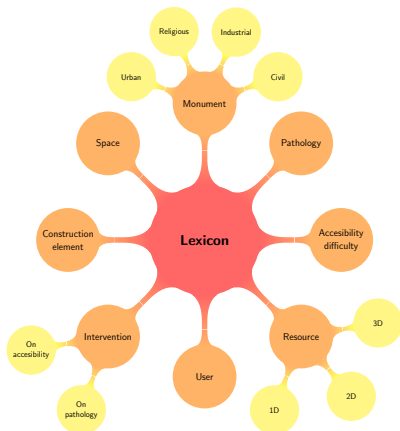


Introduction

- **GOAL:** Solve the knowledge management in Cultural Heritage (CH) domains to generate new knowledge.
- Knowledge is composed of
 - information acquisition,
 - recognition,
 - indexation and
 - classification of the most interesting features
- Strategies for CH knowledge integration given in (Liao, 2005)
- Development of a **friendly smart interface** capable of managing, by means of **hyper-graphs**, an assisted dialogue with a remote server where an **expert system** is in charge of different functionalities



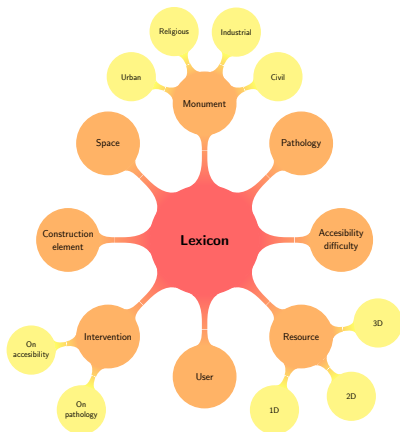
Taxonomy Modelling by Means of Hyper-Graphs



- Search in an **ontology**
- Modelled as a **hyper-graph**



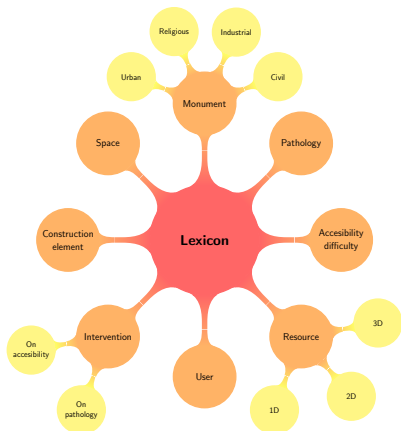
Taxonomy Modelling by Means of Hyper-Graphs



- Search in an **ontology**
- Modelled as a hyper-graph
- The search becomes much more efficient



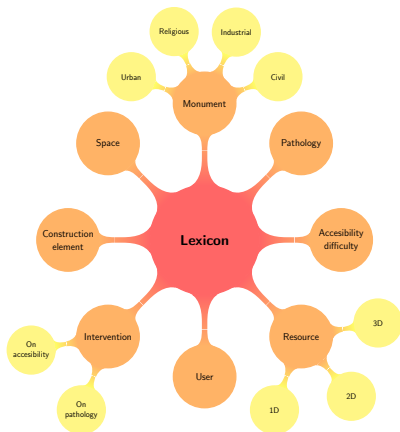
Taxonomy Modelling by Means of Hyper-Graphs



- Search in an **ontology**
- Modelled as a hyper-graph
- The search becomes much more efficient
- Reduces the amount of stored information needed



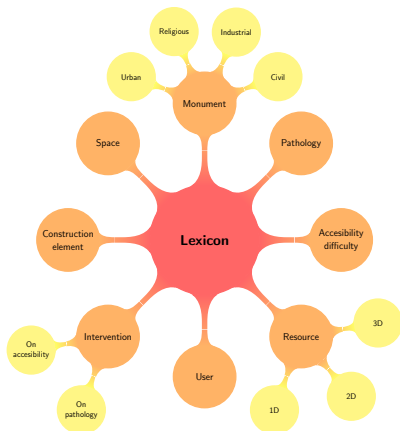
Taxonomy Modelling by Means of Hyper-Graphs



- Search in an **ontology**
- Modelled as a hyper-graph
- The search becomes much more efficient
- Reduces the amount of stored information needed



Taxonomy Modelling by Means of Hyper-Graphs

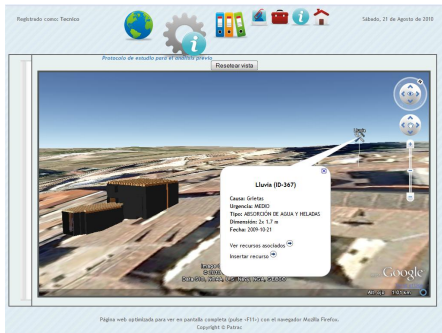


- Search in an **ontology**
- Modelled as a hyper-graph
- The search becomes much more efficient
- Reduces the amount of stored information needed



Pathologies and accessibility issues documentation interface

- Open Source technologies
- Technical-profile oriented

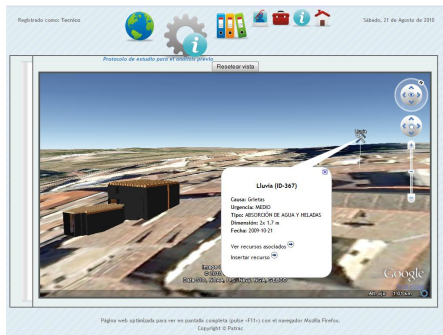


Pathologies and accessibility issues documentation interface

- Open Source technologies
- Technical-profile oriented
- 3D navigation



Pathologies and accessibility issues documentation interface



- Open Source technologies
- Technical-profile oriented
- 3D navigation
- Access to data stored in different media supports



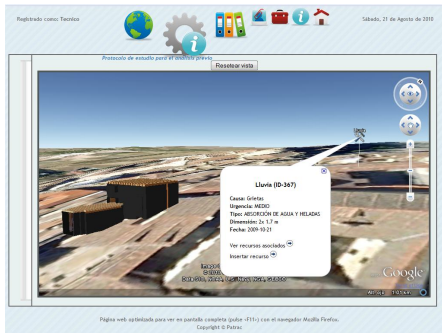
Pathologies and accessibility issues documentation interface



- Open Source technologies
- Technical-profile oriented
- 3D navigation
- Access to data stored in different media supports
- Focused and applied on CH domains in:



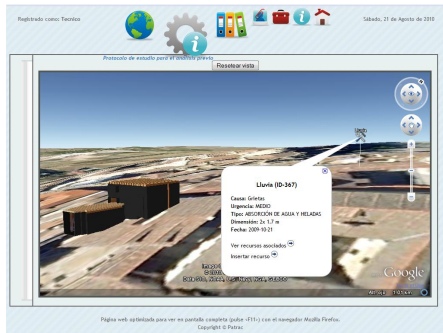
Pathologies and accessibility issues documentation interface



- Open Source technologies
- Technical-profile oriented
- 3D navigation
- Access to data stored in different media supports
- Focused and applied on CH domains in:
 - Maritime Museum of Barcelona
 - Historic Centre of Segovia



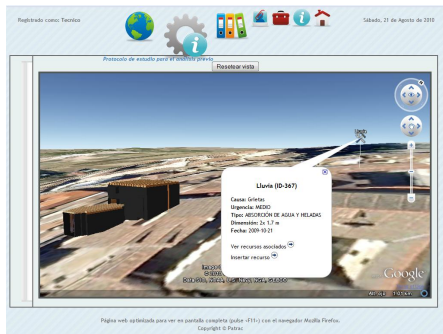
Pathologies and accessibility issues documentation interface



- Open Source technologies
- Technical-profile oriented
- 3D navigation
- Access to data stored in different media supports
- Focused and applied on CH domains in:
 - Maritime Museum of Barcelona
 - Historic Centre of Segovia
- Designed towards multi-domain extendability



Pathologies and accessibility issues documentation interface



- Open Source technologies
- Technical-profile oriented
- 3D navigation
- Access to data stored in different media supports
- Focused and applied on CH domains in:
 - Maritime Museum of Barcelona
 - Historic Centre of Segovia
- Designed towards multi-domain extendability

